

# Cosmetic Travel Tote Tutorial by Watermelon Wishes

## Material and Equipment List

- 1 yard of 44" wide quilt weight fabric
- 3/4 yards of 35" wide quilt batting
- 1 6" of 1/4" elastic (8" for each pocket)
- 2 sets of snaps
- 3.5" of sew in hook and loop tape
- snap tool or small hammer
- thread to match
- seam ripper
- safety pin (to thread elastic)
- scissors
- rotary cutter, mat and ruler (optional)
- iron and ironing board
- sewing machine
- pins
- pencil or tailors pen to transfer pattern to paper or fabric (optional)

## Tips and Tricks

- Use a seam allowance you are comfortable with. Just be consistent. I generally use a 3/8" seam allowance when making bags.
- All measurements listed are in inches and indicate the width first and height second.
- Pre-cut all pattern pieces from inexpensive fabric or wrapping paper and use as a template.

## Favorite Suppliers

[snapsource.com](http://snapsource.com)

[hawthornethreads.com](http://hawthornethreads.com)

[joann.com](http://joann.com)

[diapersewingsupplies.com](http://diapersewingsupplies.com)

<http://www.etsy.com/shop/zipit>

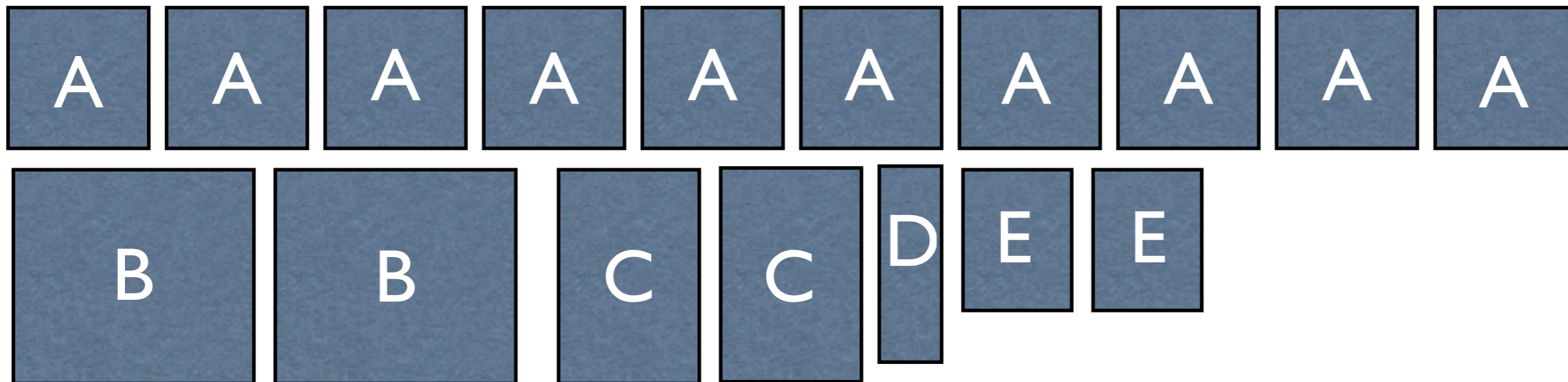
## Defining Details

- Lightweight and sized for travel
- 4 interior elasticized pockets
- 4 interior slip pockets
- Side snaps to allow for expansion
- Carry handle
- Spacious interior compartment

## Finished Measurements

6.5" x 6.5" x 6.5"

# Pattern Key



Letter	Piece	Width	Height	Fabric #	Batting #	X
A	BODY PANEL	8"	8"	10	10	
B	ELASTIC POCKET	12"	11"	2	0	
C	SLIP POCKET	8"	11"	2	0	
D	HANDLE	5"	10"	1	1*	
E	FLAP	6"	8"	2	1	

\* 2.5" x 10" strip of batting for the handle

Step #1  
Cut out all fabric and  
batting pieces  
according to Pattern  
Key (page #2).



Step #2  
Press body panels flat.

Step #3  
To form strap, fold fabric in half longways with wrong sides together.  
Press. Open and fold raw edges inward to meet on the center press  
line. Open and position batting within press lines. Press again. Fold over  
one more time to align exterior edges and press to form strap.



Step #4  
Fold slip pockets in half with wrong sides together to form two pieces  
which measure 8" x 5.5". Press. Repeat with elasticized pockets to form  
two panels which measure 12" x 5.5"

### Step #5

Layer each of the 10 body panels atop of the corresponding batting pieces with the fabric right side up.

### Step #6

Layer one flap piece atop of corresponding batting piece. Place remaining fabric flap piece atop of batting/fabric piece with the fabric pieces right sides together. Angle two of the ends with scissors.



### Step #7

Place each slip pocket atop of a body panel, aligning the raw edges with the base. Pin in place and mark the center of pocket with additional pin. Stitch down the center to create two pockets.



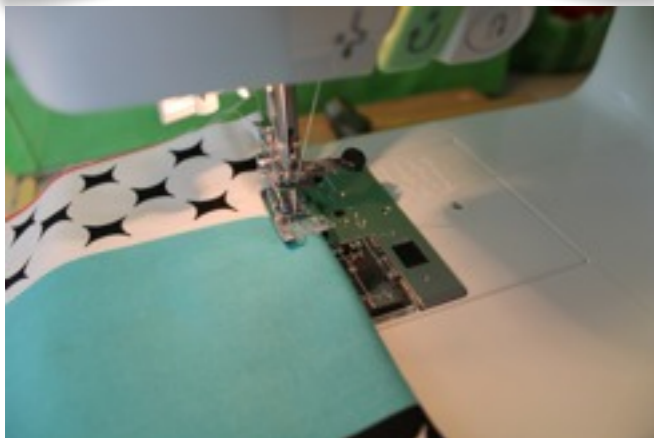
### Step #8

Stitch across the top of the elasticized pockets to form a 1/2" elastic gusset. Center elasticized pockets atop of body panels and pin at the center mark. Raw edges should be aligned at the base of the body panel. Align sides and pin in place to form hump. Gently press down hump to form two even pleats. Pin in place. Stitch across base to hold pleats in place. Thread 8" strip of elastic through top gusset and stitch in place at ends. Even out gathers in fabric and stitch down the center mark to create two pockets.



### Step #9

Stitch along long sides and angled ends of the flap. Trim excess fabric. Flip right side out. Press flat and top stitch. Position the hook side of the tape 1/2" from the angled end of the flap, on the underside, and stitch down long ends.



### Step #10

Position loop side of tape 2.5" from the top and sides of one body panel. Pin in place and stitch down long ends of tape.



### Step #11

Top stitch down long ends of the handle.





### Step #13

Place one of the body panels with snaps atop of the body panel with the loop tape. Right sides together. Stitch down the right side. Open and place the other snap body panel atop of the center loop panel. Stitch down the left side.

*Checkpoint: you should have three panels connected.*

### Step #12

Position and install a set of snaps on two of the body panels approximately 2" from the top and 2.5" from each edge.



### Step #14

Layer two body panels right sides together and stitch across the bottom.

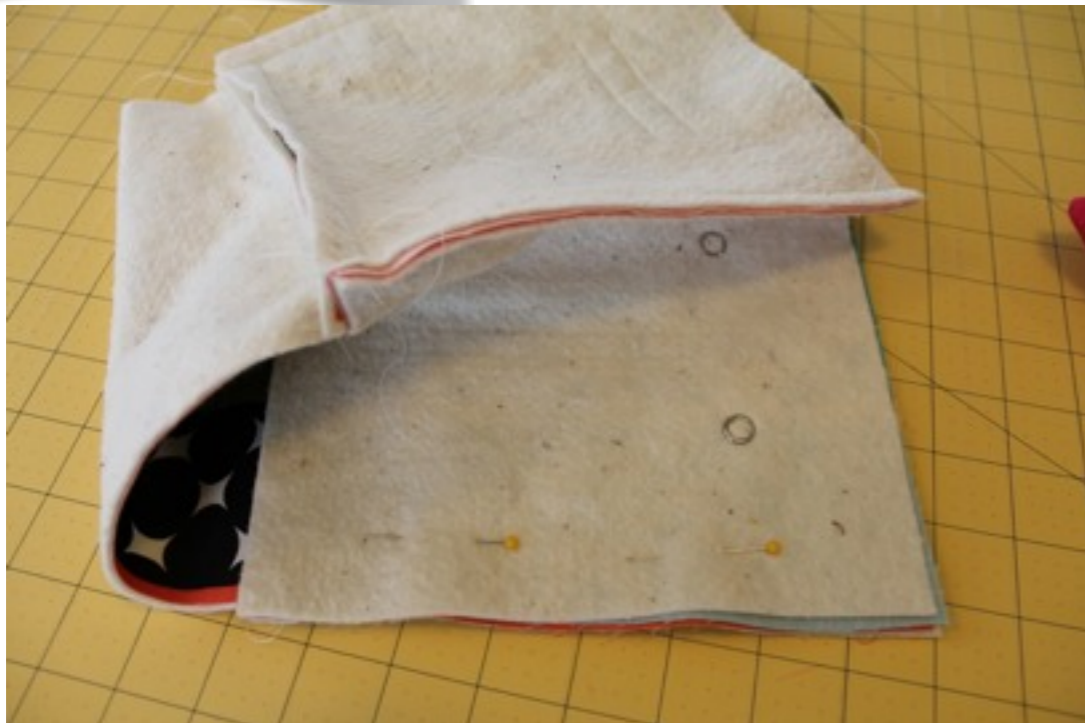


### Step #16

Take the top right side of the “T” and align in with the bottom right side of the “T”. Pin in place. Repeat with left side. Aligning top left with bottom left. Stitch sides closed. Open and align the bases on each side of the “cube”. Stitch bases closed to form a cube which will become the exterior of the bag. Turn the cube right side out and fold the top edge inward approximately a 1”. Pin in place.

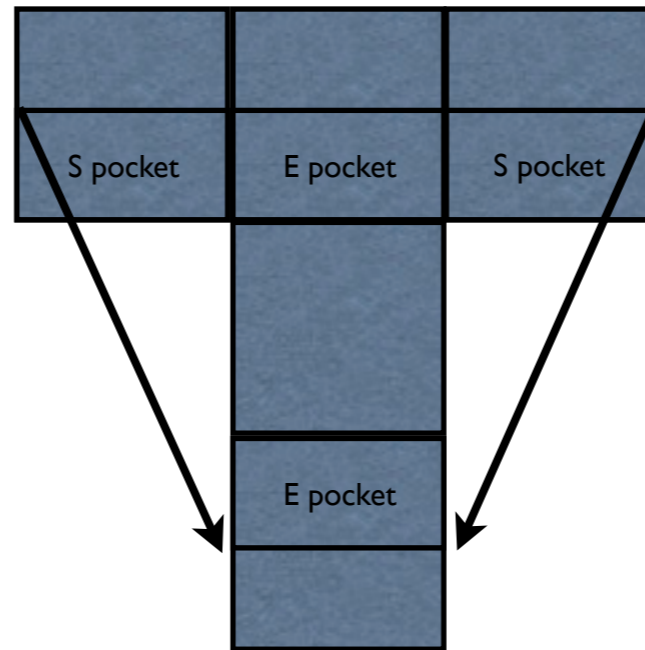
### Step #15

Position the two piece body panel atop of the three piece body panel. Aligning the bases to form a “T”. Stitch across the base.



### Step #17

You are going to repeat the same cube making process to create the interior of the bag. The pocket panels will be used for the sides and the plain fabric panel will become the base.



### Step #18

Fold the top edge outward and slip the interior inside of the exterior. Align the corners and pin the exterior and interior together.



### Step #19

Slip the flap in between the exterior and interior at the rear of the bag and pin in place. You will need to double check that the flap reaches the loop tape on the front of the bag.



### Step #21

Remove the arm on your machine and stitch all the way around the top of the bag. Reinforce the handle on both sides.



### Step #20

Position the handle between the snaps on each side. Tuck each end of the strap between the interior and exterior. Pin in place.



Congratulations! It was a pleasure sewing with you. I hope your new bag is enjoyed for years to come and you will shop with Watermelon Wishes again. Please let me know if you have any questions or suggestions. I love hearing from my customers. You can reach me directly at [orders@watermelonwishes.com](mailto:orders@watermelonwishes.com) or on my cell 703-577-0283. If you visit our webpage you will find a collection of complimentary tutorials [www.watermelonwishes.com](http://www.watermelonwishes.com)



All designs and illustrations are copyright protected by Watermelon Wishes. You may not share, distribute, store in a retrieval system or sell any of these files or images within or as part of a digital or printed collection, download, CD or in commissioned or commercial designs. Digital manipulation of any portion of the file without written permission from Watermelon Wishes is unlawful and strictly prohibited. All rights reserved. Watermelon Wishes © 2013.

PDF and pattern sales are final.

Note to my fellow Etsy sellers: You are welcome to sell your finished bag but I ask that you do not co-brand your creations with my company (Watermelon Wishes) or use any of my item descriptions or photos in your listing or marketing materials.