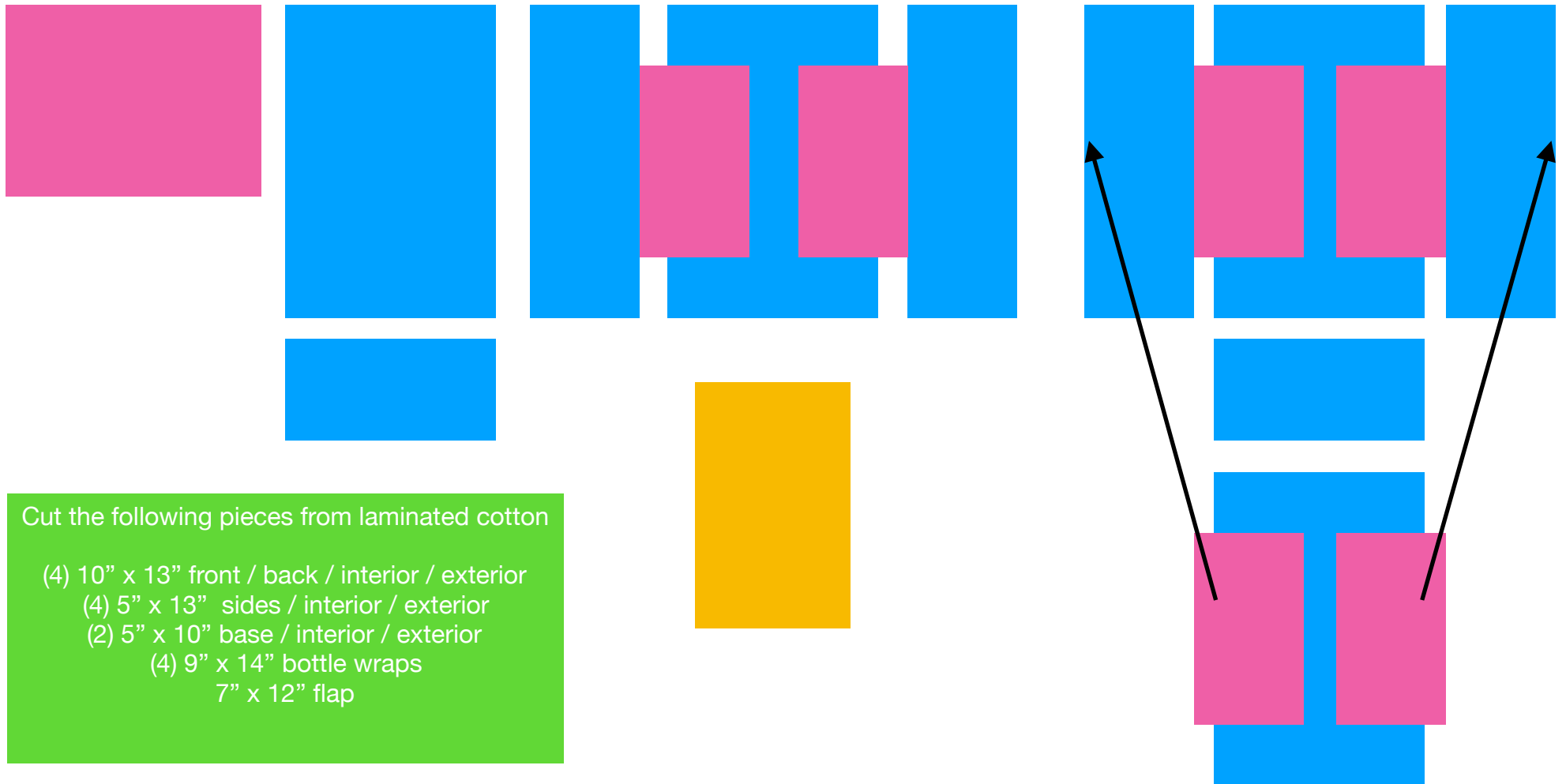


Sewspire 4 Bottle Laminated Tote Bag



Cut the following pieces from laminated cotton

- (4) 10" x 13" front / back / interior / exterior
- (4) 5" x 13" sides / interior / exterior
- (2) 5" x 10" base / interior / exterior
- (4) 9" x 14" bottle wraps
7" x 12" flap

Instructions: Fold the bottle wraps in half, wrong sides facing, to form tubes which measure 9" tall by 7" wide and position atop of the two interior body panels as indicated by the pink rectangles on the diagram. Attach the sides to one interior body panel and the base to the other as depicted with the blue rectangles on the diagram. Fashion the exterior in the same manor less the bottle wraps. Fold the flap in half, pretty sides facing, to form a piece which measures 7" wide by 6" tall. Stitch the sides closed, turn right side out and poke out the corners. Attach hook and loop tape to the center top of the flap and tuck the raw edges of the flap between the back exterior and interior panels. Fold the flap over and mark the spot in which you should attach the other side of the hook and loop tape to the exterior front of the bag. Attach the hook and loop tape to the exterior. Insert your webbed handle at the center of each side between the interior and exterior layers. Stitch all the way around the top edge to secure the flap, handle, exterior and interior layers using a roller foot or walking foot.